

YOUR GUIDE TO GETTING AROUND LEEDS



SUSTAINABLE CHANGE FOR THE FUTURE



Our aim is to become a University with a reputation for outstanding performance on sustainability; a university that challenges the status quo and is renowned for its open, welcoming environment. We are committed to making the most of resources and fostering a staff and student body where sustainable travel is the norm in order to reduce our carbon emissions and to tackle impacts at a local and global level.

You can read more about the University of Leeds Sustainability Strategy at sustainability.leeds.ac.uk/sustainability-strategy

WALKING

Walking is one of the easiest, healthiest ways to get around and can save you lots of money! If you are planning a trip on foot and not sure where to go, take a look at urban walking planner walkit.com/cities/leeds which will give you a route map from A to B including step count, carbon saving, calorie burn and it's free!

Visit www.visitleeds.co.uk/essentials for the Leeds City Centre walkit map which is available for download; this also shows the location of the train and bus station along with travel centres where you can buy train and bus passes.



LEEDS HAS A COMPACT CITY CENTRE AND GOOD PUBLIC TRANSPORT SERVICES MAKING IT EASY TO GET AROUND WHETHER YOU ARE ON FOOT, ON BIKE OR USING THE BUS. THE MAJORITY OF STUDENT RESIDENCES AND LOCAL FACILITIES ARE WITHIN 3 MILES OF THE UNIVERSITY AND THE CAMPUS ITSELF IS LOCATED WITHIN 20 MINUTES WALK FROM LEEDS TRAIN STATION.



CYCLING

Travelling on two wheels is another healthy, fast and cheap way to get around Leeds and on campus we have lots of facilities on hand for people cycling to the university including secure parking and showers.

Want to cycle but not got access to your own bike?

No problem! You can hire a bike at a really low cost from Velocampus which is based at the bike hub at the end of the EC Stoner and Roger Stevens building. Along with bike hire, the hub run self help maintenance drop in sessions with a comprehensive range of tools available to use, cycle training with safety and route advice for students and staff. For more information about the bike hub, hire charges, location and opening hours check out sustainability.leeds.ac.uk/sustainable-transport/bike-hire

Interested in getting involved?

Whether you are completely new to cycling or are a seasoned bike mechanic, the hub team are always looking for new volunteer recruits to help them out. It's a great way to meet new people and learn some new skills! Please contact [transport@leeds.ac.uk/0113 343 9179](mailto:transport@leeds.ac.uk) to find out more about the opportunities available.

You can also visit www.utravelactive.org.uk to find out about all of the different activities and events which are going on across campus to support staff and students to walk and cycle more regularly. Look at www.leeds.gov.uk for handy City Cycle route maps.

PUBLIC TRANSPORT

Bus

Catching the bus to campus is really easy; you can expect to see a bus running past the University every 3 minutes during the day and the students Union operate a night bus for £1.

Buses between the City Centre, the University and Headingley often cost £1 for a single journey. These services include the number 1, 6, 28 and 97 and are operated by FirstLeeds. If you are staying out late, Service 1 operates until 3.00am on Monday – Saturday nights.



How do I get a student bus pass?

To find out about how to get a discounted student bus pass visit the FirstLeeds website. The website provides information about bus timetables and the FirstLeeds mobile phone app. The app helps you plan your journey and buy bus tickets using your debit card. www.firstgroup.com/ukbus/leeds

TRAIN AND PASSES

Leeds and West Yorkshire Travel

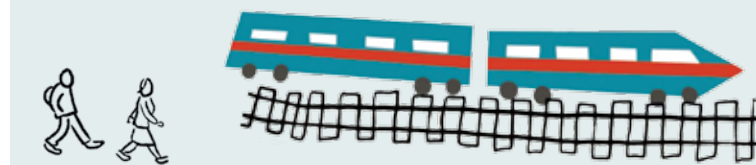
Young people aged 16 – 25 can apply for a 16 – 25 M-card from Metro. This card allows you to use a variety of buses and trains in Leeds, West Yorkshire and the Yorkshire Dales without needing to buy multiple tickets. You will also benefit from discounted fares. www.m-card.co.uk

Mature full time students aged 26+ can apply for a Student Plus MetroCard for discounted bus and train travel around West Yorkshire. If required, the Student Services Centre counter on Level 9 of the Marjorie and Arnold Ziff building can provide you with a registration certificate as evidence that you are in full time education. www.wymetro.com/TicketsAndPasses



National Train Travel

To save up to 1/3 off train travel around the UK young people aged between 16 – 25 and mature full time students can purchase a 16 – 25 railcard by applying online via www.railcard.co.uk or by visiting the travel centre at Leeds train station.



Young people aged 16 – 25, can buy a railcard online using a valid debit or credit card, a valid UK driving license or international passport, and a digital passport-style photo.

Mature students 26+ can apply online, but will need to submit evidence of eligibility. To do this, you will need to upload a copy of your student ID, a digital passport-style photo and the Mature Student Declaration form, signed by your personal tutor, or a member of the Student Services Counter team on Level 9 of the Marjorie and Arnold Ziff building.

If you are intending to travel around the UK via train make sure you purchase your tickets early to avoid large increases in train fares closer to the travel date.

For general train timetable information visit www.nationalrail.co.uk

DRIVING

Car parking facilities at the University are limited and students are not able to park on campus. We are committed to reducing our carbon emissions so we encourage our students, staff and visitors to walk, cycle and use public transport wherever possible to reduce our impact on the local environment.

To find out more about parking including disabled provision and permits please visit www.leeds.ac.uk/carparking.



City Car Club

Don't have your own car but need access to one for a quick trip or to move some stuff? Have a look at City Car Club which enables you to book out and use a range of different cars that can be reserved for as little as half an hour, a day, or as long as needed. There are 35+ new hire vehicles in designated bays across the City; we have 2 on campus that can be reserved online by phone or using the iphone app. Once reserved, you just head to the reserved vehicle, unlock it using your membership card or app and drive away. Simple!

For further information about car locations, registration, student membership, costs and bookings check out www.citycarclub.co.uk

Car Share

Going home for the weekend and trying to find a lift or wanting to drive somewhere and split your fuel costs? Check out liftshare.com/uk which enables organised car-sharing by connecting people who are going in the same direction so they can arrange to travel together and share the cost, reducing pollution and congestion at the same time!

For information about Leeds University specific car share schemes, check out sustainability.leeds.ac.uk/sustainable-transport

GET IN TOUCH WITH US!

Sustainability Service
Website: sustainability.leeds.ac.uk
Email: sustainability@leeds.ac.uk

UoL Sustainability
 UoL_Sus
 leedssustainability

Illustrations created by Scriberia.

recycle
When you have finished with this leaflet please recycle it. 100% recycled paper and printed using vegetable ink.



UNIVERSITY OF LEEDS

40 mins Walking
14 mins Cycling

1, 6, 28, 28B
93, 97, X84

Alma Road
Wood Lane
D

L M

F

City Bus Route

1 City Rail Station	7 Dental Hospital	13 Headrow
2 King Street	8 University of Leeds	14 Eastgate
3 Headrow/Town Hall	9 LGI	15 Bus Station
4 Westgate/Courts	10 Leeds Met University	16 The Markets
5 Leeds City College	11 Merrion Centre	17 Boar Lane
6 Clarendon Road	12 St. Johns Centre	Bus Stop

Mondays - Fridays 0630-1930, Saturdays 0750-1910
Buses run every few minutes

- University Accommodation**
- A Central Village Residences
 - B Oxley Residences
 - C Charles Morris
 - D Lupton Residences
 - E Liberty Dock
 - F Devonshire Hall
 - G Montague Burton Residences
 - H Sentinel Towers
 - I Henry Price Building
 - J Ellerslie Hall
 - K Lyddon Hall
 - L James Baillie Park
 - M North Hill Court
 - N Leodis Residences
 - O Grayson Heights
 - P St Marks

- CYCLING**
- Cycle training
uttravelactive@sustrans.org.uk
 - Bike hub (repairs, maintenance, hire)
0113 343 9179
 - Campus security (report bike damage or theft)
security@leeds.ac.uk
 - Estates helpdesk (report faulty or damaged campus facilities)
eshelp@leeds.ac.uk
 - University Bicycle Users Group
www.leeds.ac.uk/leedsbug/
 - Leeds Cycle Campaign
www.leedscyclingcampaign.co.uk

- PUBLIC TRANSPORT**
- Firstbus travel shop (11 New Market Street, LS1 6DG)
0113 381 5550
 - Students union night bus
0113 3801 400 or luuhelpdesk@leeds.ac.uk

- TRAINS AND PASSES**
- Metroline (timetables, routes, passes)
0113 245 7676 or www.wymetro.com
 - National Rail Enquiries
0345 748 4950 or www.nationalrail.co.uk

- DRIVING**
- Campus car parking
parking@leeds.ac.uk
 - City Car Club helpline
0845 330 1234



20 mins Walking
7 mins Cycling

20 mins Walking
7 mins Cycling

40 mins Walking
14 mins Cycling

Public Transport Map

